

SOLAREEDGE

SINGLE-PHASE INVERTERS WITH HD-WAVE GENESIS TECHNOLOGY

SE3000H, SE5000H, SE6000H, SE8250H, SE10000H



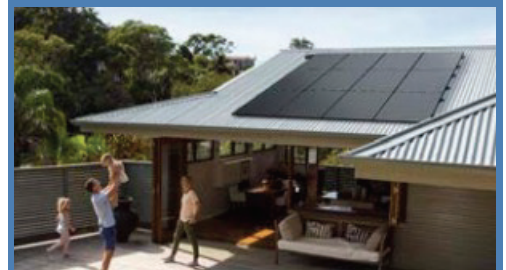
The Genesis inverter combines the traditional SolarEdge benefits such as DC-optimised production, advanced safety and long-term warranties with new levels of convenience giving you easier designs and faster installations.

For systems up to 6.7kW DC (with a 5kW Genesis inverter), only one PV string is needed with just one DC isolator.

Key benefits include:

- Single string design for inverters up to 5kW AC.
- Faster, simpler installations with maximum design flexibility.
- Record-breaking inverter efficiency for more energy production.
- Battery-ready solution supporting on-grid storage.
- Rapid inverter commissioning via smartphone using SetApp.
- Built-in SafeDC™ and arc fault protection.
- Compact, lightweight and easy to install.
- Supports Wi-Fi communications (sold separately).
- IP65-rated, suitable for outdoor and indoor installation.

How you benefit:



HIGH EFFICIENCY

Record-breaking 99% weighted efficiency.



FLEXIBLE DESIGN

Individual panel monitoring and management allows flexible designs and increased power production.



SAFE OPERATION

Automatic panel-level voltage shutdown feature for installer and firefighter safety.



INNOVATIVE

Single string design for inverters up to 5kW AC.



SOLAHART WARRANTY

Enjoy a 12-year warranty, for peace of mind.

APPLICABLE TO INVERTERS WITH PART NUMBER	SE3000H	SE5000H	SE6000H	SE8250H	SE10000H	UNITS
	SEXXXXH-AULXXBXX4					
OUTPUT						
Rated AC power output	3000	5000	6000	8250	10000	VA
Maximum ac power output	3000	5000	6000	8250	10000	VA
AC output voltage (nominal)	220/230					Vac
AC output voltage range	184 - 264.5					Vac
AC frequency (nominal)	50/60 ± 5%					Hz
Maximum continuous output current	14	23	27.5	37.5	45.5	A
Total Harmonic Distortion (THD)	< 3					%
Power factor	1, adjustable -0.8 to 0.8					
Utility monitoring, islanding protection, configurable power factor, country configurable thresholds	Yes					
Short circuit current from the pv array	14	23	27.5	37.5	45.5	A
INPUT						
Maximum DC power	4650	7750	9300	12785	15500	W
Transformer-less, ungrounded	Yes					
Maximum input voltage	480					Vdc
Nominal DC input voltage	380		400			Vdc
Maximum input current	9	13.5	16.5	22	25.5	Adc
Reverse-polarity protection	Yes					
Ground-fault isolation detection	600kΩ sensitivity per unit					
Maximum inverter efficiency	99.2					%
European weighted efficiency	98.8	99				%
Nighttime power consumption	< 2.5					W
ADDITIONAL FEATURES						
Supported communication interfaces	RS485, Ethernet, Wi-Fi (optional) ⁽¹⁾					
Smart energy management ⁽²⁾	Export limitation					
Arc fault protection	Integrated, user configurable (according to UL1699B)					
Inverter commissioning	With the SetApp mobile application using built-in Wi-Fi access point for local connection					
STANDARD COMPLIANCE						
Safety	IEC62109, AS/NZS3100					
Grid connection standards	AS/NSZ 4777.2:2020, EN 50549-1					
Emissions	IEC61000-6-2, IEC61000-6-3, IEC61000-3-11, IEC61000-3-12, FCC Part 15 Class B					
INSTALLATION SPECIFICATIONS						
AC output conduit size / wire cross section	25mm maximum / 1-13 mm ²					
DC input conduit size / # of strings / wire cross section	25mm maximum / 1-2 strings / 1-13 mm ²			25mm maximum / 1-3 strings / 1-13 mm ²		
Dimensions with safety switch (H x W x D)	450 x 370 x 174			540 x 370 x 185		mm
Weight with safety switch	10	11.4	11.9	17.6		kg
Noise	< 25			< 50		dBA
Cooling	Natural convection					
Operating temperature range	-40 to +60 ⁽³⁾					°C
Protection rating	IP65, suitable for outdoor and indoor installations					
Maximum altitude	3000					m
Manufacturing countries	China / Vietnam / Hungary					

(1) Wi-Fi connectivity requires connection of an additional Wi-Fi component, ordered separately. For more details ask your Solahart sales person.

(2) To support export limitation, the SolarEdge energy meter is required. For more details ask your Solahart sales person.

(3) Full power up to at least 50°C. For power de-rating information refer to: <https://www.solaredge.com/sites/default/files/se-temperature-derating-note.pdf>

Specifications and designs included in this data sheet are subject to change without notice.

Solahart Australia 1300 769 475 | solahart.com.au